

Polymer Plates

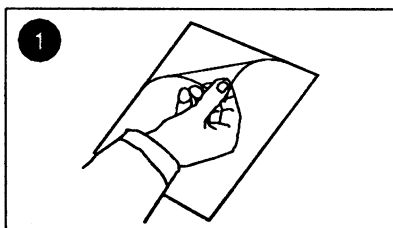
Standard & Long-Life Polymer Plates

For small to medium-sized printing runs, polymer printing plates are used which, with careful handling, permit several thousand printing operations.

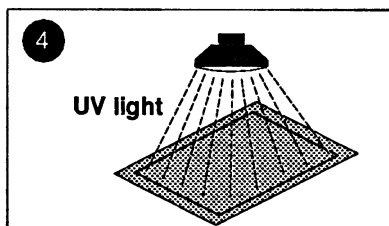
Teca-Print recommends the standard printing plates for small runs, and the long-life printing plates for medium-sized runs. For sealed inking systems, we recommend the use of long-life plates.

Standard- as well as long-life plastic plates are available from stock, both in water and alcohol washable versions.

You will find the different plate types and the processing instructions on the other side.



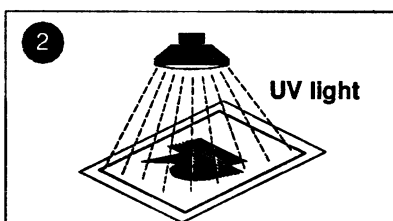
Remove protective sheet.



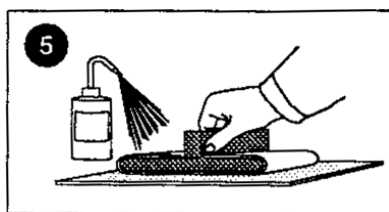
Expose plate under screen film.

7

Re-expose in the exposure unit or in the drying cabinet.



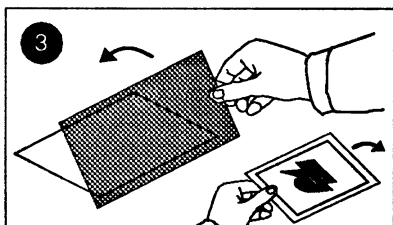
Place the delustered positive film with the coating downwards, evacuate and expose.



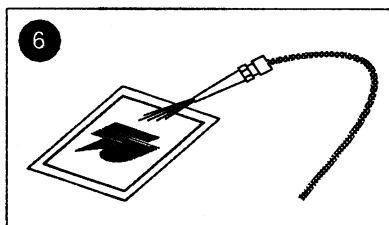
Wash plate.

8

Drying in the drying cabinet or oven at the prescribed temperature



Remove positive film, place dotted screen film in position with coating downwards, and evacuate.



Dry the plate with compressed air jet.

Screen for polymer-plate	
Designation:	E 7812 with 120 points per cm.
Dimensions:	130 x 180 mm Art.-No.: 90 00 23
Dimensions:	166 x 600 mm Art.-No.: 90 00 24

Polymer Plates

Standard & Long-Life Polymer Plates

 **Teca-Print**

Polymer plate – Technical data

		Water washable				Washable with alcohol			
		I 18 (unpunched) L 18 (punched)				B 17 (unpunched) P 17 (punched)			
Standard plate	Exposure unit BG.... :	351 sec	25/30 sec	35/50 sec	35/100 sec	351 sec	25/30 sec	35/50 sec	35/100 sec
	Exposure time: Rollfilm Exposure time: Screenfilm	ca. 50 ca. 50	40...60 40...60	40...60 40...60	40...60 40...60	50...60 50...60	60...80 60...80	60...80 60...80	60...80 60...80
	Wash out with plush-cloth rubber:	Wash out for 1.0 min. Water temp: 20 to 25 °C				1.0 min.			
	Re-expose and dry or: Re-expose, and then dry in the oven	10 min. at 60 °C in the drying cabinet 5 min. in the exposure unit 10 min. at 60 °C				>30 min. at 80 °C in the drying cabinet 5 min. in the exposure unit 30 min. at 80 °C			
Long-Life plate	Exposure unit BG.... :	351 sec	25/30 sec	35/50 sec	35/100 sec	351 sec	25/30 sec	35/50 sec	35/100 sec
	Exposure time: Roll-film Exposure time: Screen-film	40 40	40 40	40 40	40 40	60 60	120 120	150 150	150 150
	Wash with plush-cloth rubber:	Wash out for 2.30 min. Water temp: 28 °C				1.0 min.			
	Re-expose, and then dry in the oven	10 min. in the exposure unit or in the drying cabinet 30 min. at 100 °C				10 min. in the exposure unit or in the drying cabinet 30 min. at 120 °C			

The processing of our printing plates must take place away from daylight.

Room lighting: Yellow light, darkroom

Film: Use a matt film! Matt coated face downwards.

Screen film: We recommend our E7812 screen with 120 points per cm.

Storage: At 20 - 22 °C and 60% relative humidity

Exposure unit fitted with tubes		
Exposure unit	Article-no.	Type
BG 35/50 and 501	821 209 663	BASF-Nyloprint or Sylvania F20 W/350 BL
BG 25/30 and 351	821 209 664	
BG 35/100	821 209 672	LT 36 W/010R UV

Dispersion light film	
Exposure unit	Article-no.
BG 35/50	90 00 35
BG 501	89 01 12
BG 25/30	90 00 40
BG 351	89 01 17
BG 35/100	90 00 37



Teca-Print AG
Postfach
Bohlstrasse 17
CH-8240 Thayngen
Tel. +41 (0)52 645 2000
Fax. +41 (0)52 645 2101
info@teca-print.ch
www.teca-print.com